



1C REAR ELEVATION  
OPTION 4:12  
1/4"=1'-0"

**MATERIAL SCHEDULE**

**SIDING:**  
 \* MANUFACTURER: HARD  
 \* COLOR: WHITE  
**SHIMS, SIDING:**  
 \* MANUFACTURER: HARD  
 \* COLOR: WHITE  
**TRIM/SOFFIT/FASCIA:**  
 \* MANUFACTURER: T.B.D. (ALUMINUM)  
 \* COLOR: WHITE  
**GUTTERS:**  
 \* MANUFACTURER: T.B.D. (ALUMINUM)  
 \* COLOR: WHITE  
**WINDOWS:**  
 \* MANUFACTURER: SHWENTON (VINYL)  
 \* COLOR: BLACK  
**FRONT DOOR:**  
 \* MANUFACTURER:  
 \* COLOR: BLACK  
**GARAGE DOOR:**  
 \* MANUFACTURER: HORMANN (STEEL)  
 \* COLOR: WHITE  
**ROOFING:**  
 \* MANUFACTURER: TAMKO (ASPHALT SHINGLES)  
 \* COLOR: ARCHITECTURAL WEATHERED WOOD

- ELEVATION NOTES**
- \* DO NOT SCALE ELEVATIONS, VERIFY WALL HEIGHTS WITH PLANS, CONTACT ARCHITECT WITH ANY DISCREPANCIES
  - \* WHEN INTERSECTING TWO ROOF PLANES WITH DIFFERENT ROOF PITCHES, BLOCK TOP OF STUD WALL OR BEAM AS REQUIRED TO ALLOW FASCIAS TO LINE UP RETAINING A COMMON EAVE DISTANCE.
  - \* SEE ROOF PLAN FOR TYPICAL EAVE AND RAKE DISTANCES UNLESS OTHERWISE NOTED ON ELEVATIONS
  - \* IF RIDGE AND SOFFIT VENTS PROVIDE LESS THAN THE CODE MINIMUM, ADD CAN VENTS AS NEEDED TO THE REAR AND SIDE ELEVATIONS
- WINDOW NOTES**
- \* TOP OF WINDOWS 106 3/4" ABOVE SUB-FLOOR FOR 10'-0" PLATES, UNLESS OTHERWISE NOTED
  - \* TOP OF WINDOWS 82 3/4" ABOVE SUB-FLOOR FOR 8'-0" PLATES, UNLESS OTHERWISE NOTED
  - \* ALL WINDOWS ARE DESIGNATED IN ROUGH OPENING, SHOWN IN FEET AND INCHES  
 EXAMPLE: 2555 = 2'-5" X 5'-5" (TO BE MET WITHIN 2" OR EXCEEDED)
  - \* PROVIDE (2)2 X 12'S ABOVE ALL WINDOWS AND OPENINGS UNLESS OTHERWISE NOTED
  - \* PROVIDE SAFETY GLAZING IN ALL WINDOWS WITHIN 24" OF MAIN ENTRY DOOR, WITHIN 18" OF FLOOR, IN TUB/SHOWER ENCLOSURES, AND IN STAIR WELLS
  - \* PROVIDE WINDOW GUARDS THAT COMPLY WITH ASTM F2006 OR F2090 WHEN SILL IS LESS THAN 24" HIGH ABOVE THE FLOOR
  - \* ALL FENESTRATIONS SHALL HAVE A MAXIMUM U-VALUE AS FOLLOWS:  
 WINDOWS & DOORS - 0.32, SKYLIGHTS - 0.55
- Ⓔ - EGRESS WINDOW  
 Ⓕ - FIXED WINDOW  
 Ⓖ - TEMPERED GLASS

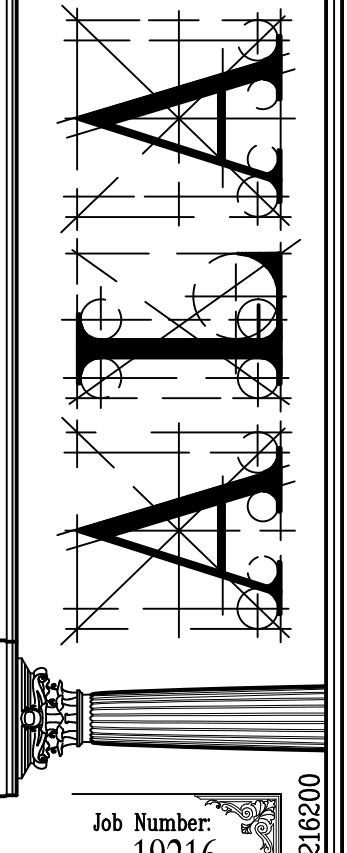
DESIGN STAGE

|                    |             |             |             |             |
|--------------------|-------------|-------------|-------------|-------------|
| CONCEPTUAL DESIGN  | 08-11-19 SM | 08-11-19 SM | 08-11-19 SM | 08-11-19 SM |
| PRELIMINARY DESIGN | 08-11-19 SM | 08-11-19 SM | 08-11-19 SM | 08-11-19 SM |
| DESIGN DEVELOPMENT | 08-11-19 SM | 08-11-19 SM | 08-11-19 SM | 08-11-19 SM |
| RELEASE FOR BID    | 08-05-19 BU | 08-11-19 BU | 08-11-19 BU | 08-11-19 BU |
| FINAL REVIEW       | 08-05-19 BU | 08-11-19 BU | 08-11-19 BU | 08-11-19 BU |
| RELEASE FOR PERMIT | 08-11-19 SM | 08-11-19 BU | 08-11-19 BU | 08-11-19 BU |
| REVISION           | 08-11-19 SM | 08-11-19 BU | 08-11-19 BU | 08-11-19 BU |

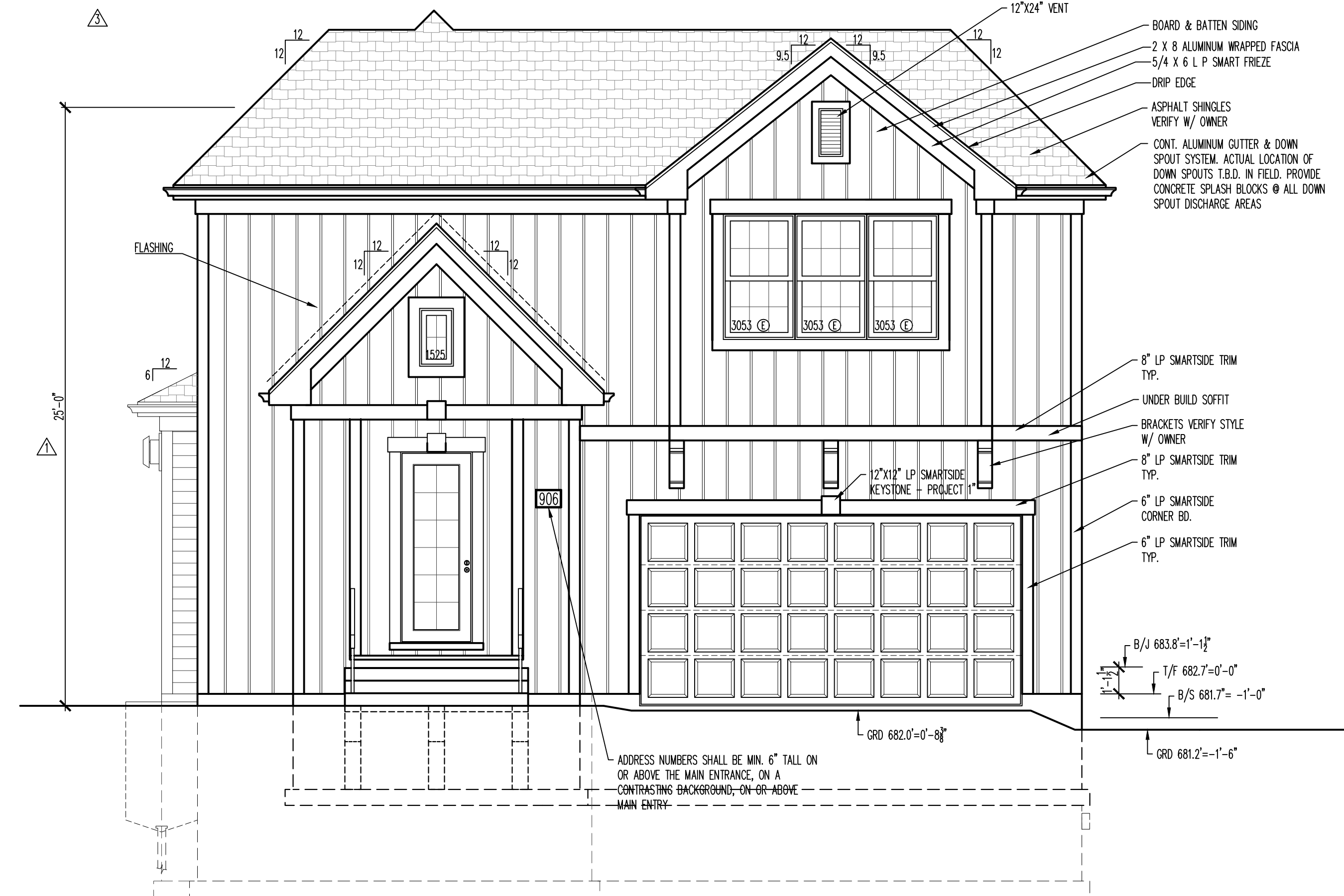
NAPOLEON RESIDENCE  
 FAIRFIELD HOMES  
 906 NORTH DOUGLAS AVE.  
 ARLINGTON HEIGHTS, IL

FRONT ELEVATION  
 REAR ELEVATION

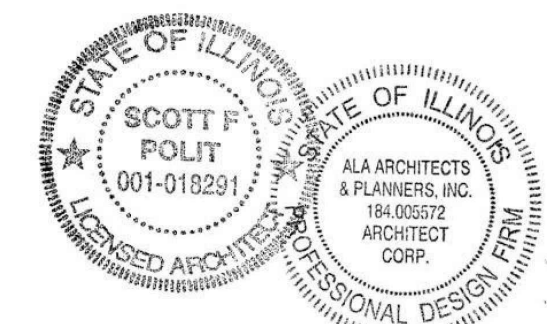
Architects & Planners, Inc.  
 2000 Behan Road at Rt. 176  
 Crystal Lake, Illinois 60014  
 Telephone: 815-788-0200 Fax: 815-788-0201

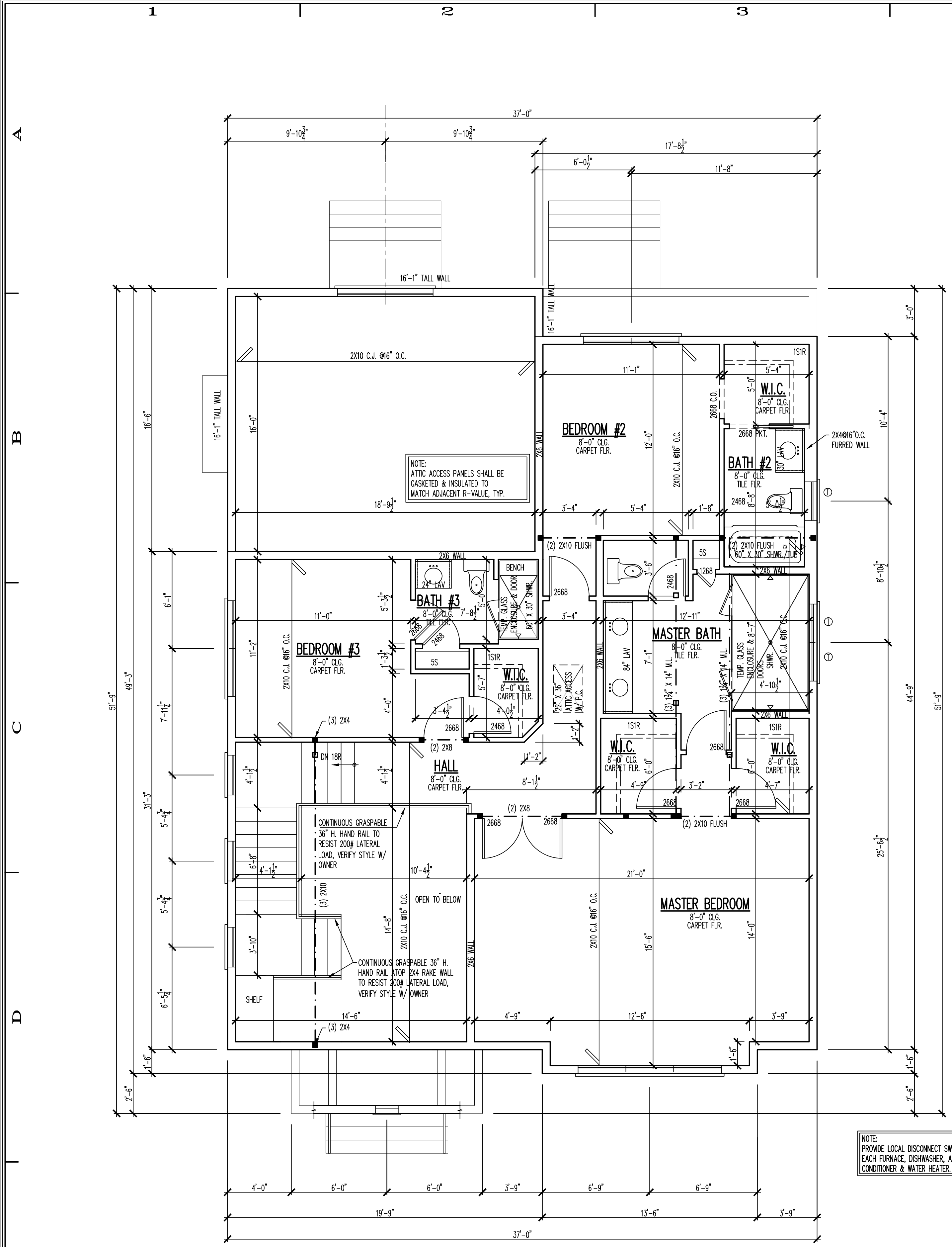


Job Number: 19216  
 Sheet Number: A200  
 Plan Number: 19216200



5E FRONT ELEVATION  
1/4"=1'-0"





1E AT01 SECOND FLOOR PLAN

1/4"=1'-0"

NOTE: WINDOWS IN THE STAIRWAY TO SECOND FLOOR SHALL BE SAFETY GLAZING ACCORDING SECTION: IRC R308.4

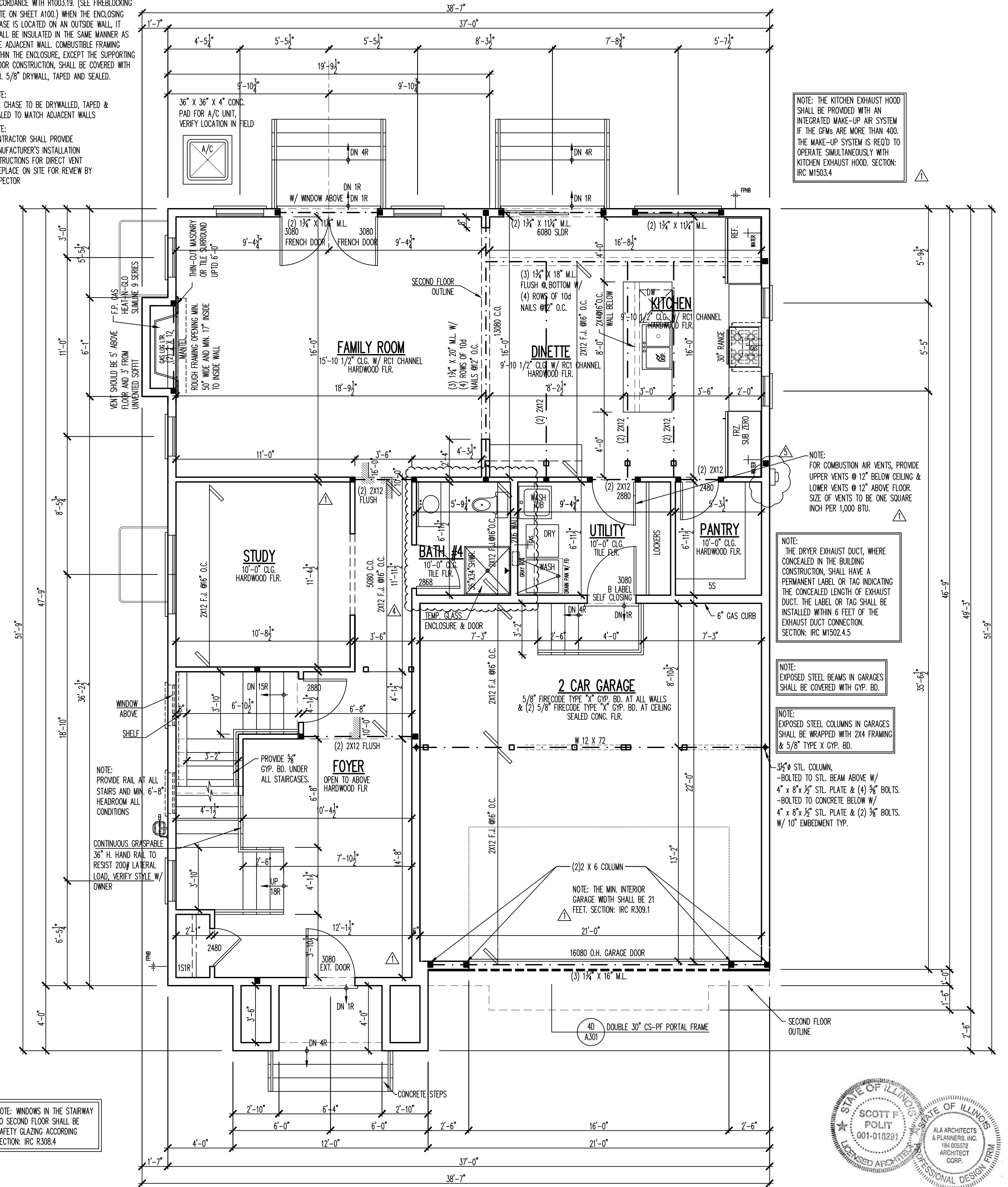
2. PLY CONNECTION FOR TOP LOADED L.V. 1-3/4" PIECE WIDTH:  
 PROVIDE 100 NAILS, 3" LONG MIN. @ 12" O.C. IN 3 ROWS ON 1 SIDE OR  
 PROVIDE 120-160 NAILS, 3-1/4" LONG MIN. @ 12" O.C. IN 2 ROWS ON 1 SIDE OR  
 PROVIDE SCREWS, 3-3/8" OR 3-1/2" LONG @ 24" O.C. IN 2 ROWS ON 1 SIDE

3. PLY CONNECTION FOR TOP LOADED L.V. 1-3/4" PIECE WIDTH:  
 PROVIDE 100 NAILS, 3" LONG MIN. @ 12" O.C. IN 3 ROWS ON BOTH SIDES OR  
 PROVIDE 120-160 NAILS, 3-1/4" LONG MIN. @ 12" O.C. IN 2 ROWS ON BOTH SIDES OR  
 PROVIDE SCREWS, 3-3/8" OR 3-1/2" LONG @ 24" O.C. IN 2 ROWS ON BOTH SIDES OR  
 PROVIDE SCREWS, 5" LONG @ 24" O.C. IN 2 ROWS ON 1 SIDE

NOTE:  
 FIRE-BLOCKING SHALL BE INSTALLED IN ACCORDANCE WITH R1003.19. (SEE FIREBLOCKING NOTE ON SHEET A100.) WHEN THE ENCLOSING CHASE IS LOCATED ON AN OUTSIDE WALL, IT SHALL BE INSULATED IN THE SAME MANNER AS THE ADJACENT WALL. COMBUSTIBLE FRAMING WITHIN THE ENCLOSURE, EXCEPT THE SUPPORTING FLOOR CONSTRUCTION, SHALL BE COVERED WITH MIN. 5/8" DRYWALL, TAPED AND SEALED.

NOTE:  
 F.P. CHASE TO BE DRYWALLED, TAPED & SEALED TO MATCH ADJACENT WALLS

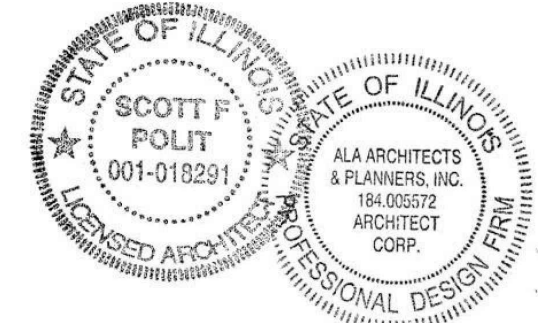
NOTE:  
 CONTRACTOR SHALL PROVIDE MANUFACTURER'S INSTALLATION INSTRUCTIONS FOR DIRECT VENT FIREPLACE ON SITE FOR REVIEW BY INSPECTOR



1E AT01 FIRST FLOOR PLAN

1/4"=1'-0"

| ALA SQUARE FOOTAGE |      |
|--------------------|------|
| FIRST FLOOR        | 1249 |
| SECOND FLOOR       | 1155 |
| RESIDENCE TOTAL    | 2404 |
| GARAGE             | 506  |



| REVISIONS | DATE     | DESCRIPTION |
|-----------|----------|-------------|
| 1         | 08-11-19 | SM          |
| 2         | 08-11-19 | SM          |
| 3         | 08-11-19 | SM          |
| 4         | 08-11-19 | SM          |
| 5         | 08-11-19 | SM          |

DESIGN STAGE

CONCEPTUAL DESIGN  
 PRELIMINARY DESIGN  
 DESIGN DEVELOPMENT  
 RELEASE FOR BID  
 FINAL REVIEW  
 RELEASE FOR PERMIT

NAPOLEON RESIDENCE  
 FAIRFIELD HOMES  
 906 NORTH DOLGULAS AVE.  
 ARLINGTON HEIGHTS, IL

FIRST FLOOR PLAN  
 SECOND FLOOR PLAN

Architects & Planners, Inc.  
 2000 Behan Road at Rt. 176  
 Crystal Lake, Illinois 60014  
 Telephone: 815-789-2000 Fax: 815-789-9011

Job Number: 19216  
 Sheet Number: A101