

**ELEVATION NOTES**

- DO NOT SCALE ELEVATIONS, VERIFY WALL HEIGHTS WITH PLANS, CONTACT ARCHITECT WITH ANY DISCREPANCIES
- WHEN INTERSECTING TWO ROOF PLANES WITH DIFFERENT ROOF PITCHES, BLOCK TOP OF STUD WALL OR BEAM AS REQUIRED TO ALLOW FASCIAS TO LINE UP, RETAINING A COMMON EAVE DISTANCE
- SEE ROOF PLAN FOR TYPICAL EAVE AND RAKE DISTANCES UNLESS OTHERWISE NOTED ON ELEVATIONS
- IF RIDGE AND SOFFIT VENTS PROVIDE LESS THAN THE CODE MINIMUM, ADD CAN VENTS AS NEEDED TO THE REAR AND SIDE ELEVATIONS

**WINDOW NOTES**

- TOP OF WINDOWS 3/4" ABOVE SUB-FLOOR
- FOR 9'-0" PLATES, UNLESS OTHERWISE NOTED
- TOP OF WINDOWS 3/4" ABOVE SUB-FLOOR
- FOR 8'-0" PLATES, UNLESS OTHERWISE NOTED
- ALL WINDOWS ARE DESIGNATED IN ROUGH OPENING, SHOWN IN FEET AND INCHES
- EXAMPLE: 2565 = 2'-5" X 5'-5" (TO BE MET WITHIN 2" OR EXCEEDED)
- PROVIDE (2)2 X 12'S ABOVE ALL WINDOWS AND OPENINGS UNLESS OTHERWISE NOTED
- PROVIDE SAFETY GLAZING IN ALL WINDOWS WITHIN 24" OF MAIN ENTRY DOOR, WITHIN 18" OF FLOOR, IN TUB/SHOWER ENCLOSURES, AND IN STAIR WELLS
- PROVIDE WINDOW GUARDS THAT COMPLY WITH ASTM F2006 OR F2090
- WHEN SILL IS LESS THAN 24" HIGH ABOVE THE FLOOR
- ALL FENESTRATIONS SHALL HAVE A MAXIMUM U-VALUE AS FOLLOWS:

WINDOWS & DOORS - 0.30, SKYLIGHTS - 0.55

- EGRESS WINDOW
- TEMPERED GLASS
- FIXED WINDOW

**MATERIAL SCHEDULE**

**SIDING:**

- MANUFACTURER: HARDI
- COLOR: NIGHT GRAY

**SHAKE SIDING:**

- MANUFACTURER: HARDI
- COLOR: NIGHT GRAY

**TRIM/SCUTTLEWORK:**

- MANUFACTURER: T.B.D. (ALUMINUM)
- COLOR: WHITE

**STONE:**

- MANUFACTURER: BORAL COUNTY
- COLOR: LEDGESTONE ECO RIDGE
- W/ LIGHT GRAY MORTAR

**SUITERS:**

- MANUFACTURER: T.B.D. (ALUMINUM)
- COLOR: WHITE

**WINDOWS:**

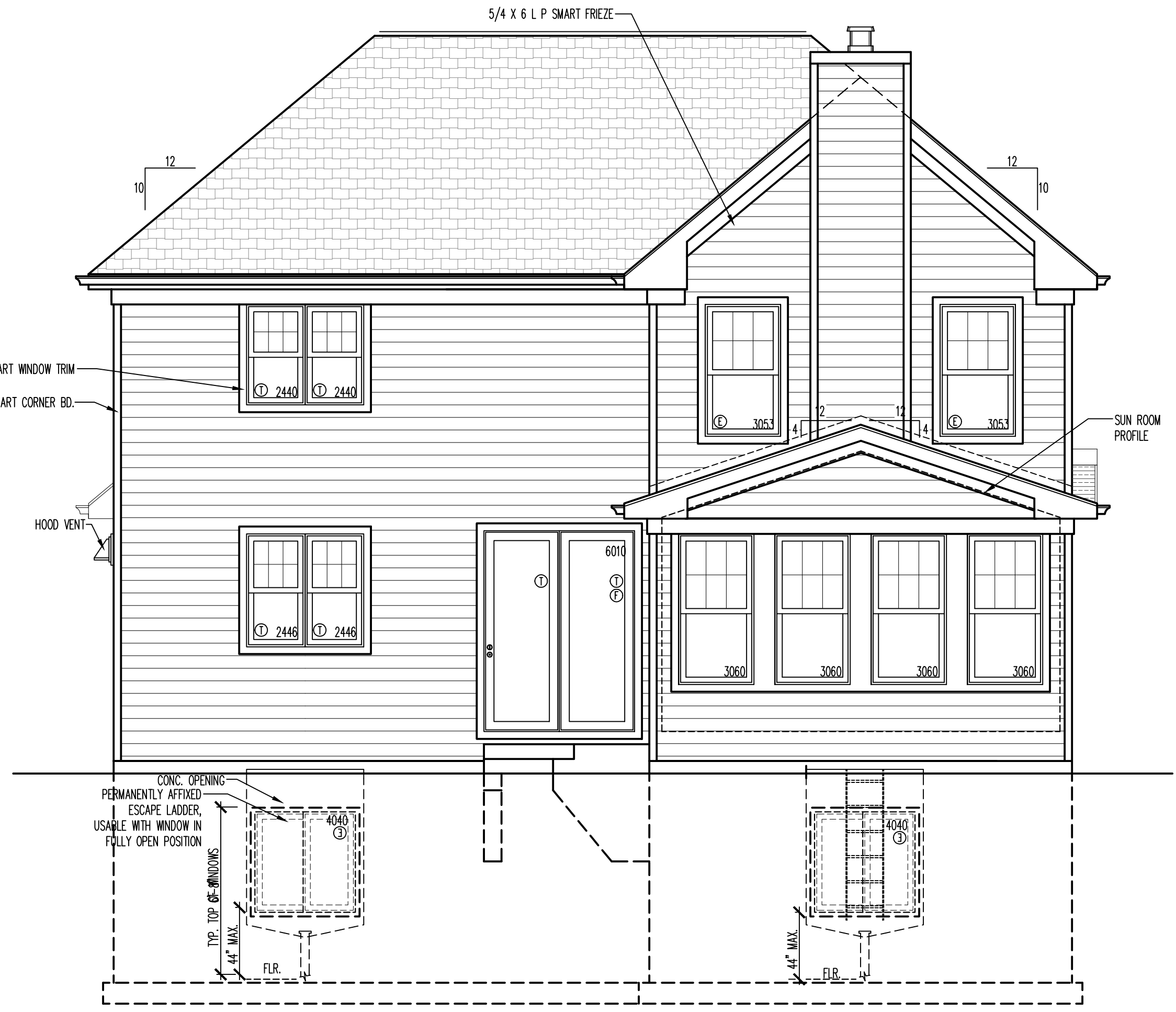
- MANUFACTURER: SIMONTON (WYLL)
- COLOR: WHITE, GRILLES TOP ONLY

**GARAGE DOOR:**

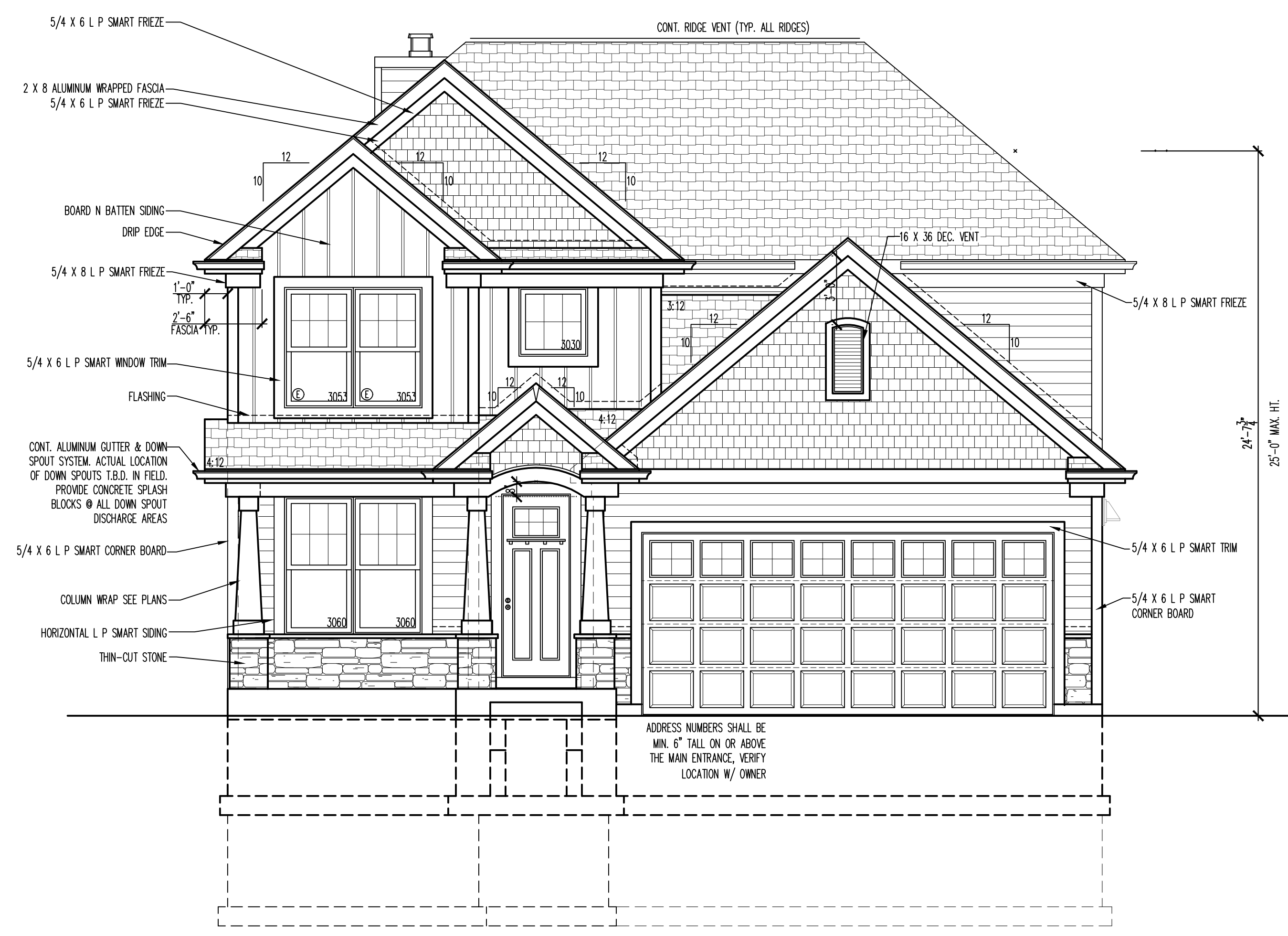
- MANUFACTURER: HORMANN (STEEL)
- COLOR: WHITE COTTAGE

**ROOFING:**

- MANUFACTURER: TAMKO (ASPHALT SHINGLES)
- COLOR: ARCHITECTURAL WEATHERED WOOD



1C REAR ELEVATION  
A200  
1/4"=1'-0"



4E FRONT ELEVATION  
A200  
1/4"=1'-0"

REVISIONS	DATE	BY	DESCRIPTION
5			
4			
3			
2			
1			

DESIGN STAGE

CONCEPTUAL DESIGN  
PRELIMINARY DESIGN  
DESIGN DEVELOPMENT  
RELEASE FOR BID  
FINAL REVIEW  
RELEASE FOR PERMIT  
REVISION

10-15-19 BAJ  
10-16-19 COR  
10-25-19 BAJ  
10-26-19 BAJ  
11-05-19 BAJ

FAIRFIELD HOMES / KEVIN DAVIS  
921 N BEVERLY LANE  
ARLINGTON HEIGHTS, IL 60004

Architects & Planners, Inc.  
2000 Behan Road at Rt. 176  
Crystal Lake, Illinois 60014  
Telephone: 815-788-0200 Fax: 815-788-0201

**ALA**

Job Number: 19243  
Sheet Number: A200

19243200

